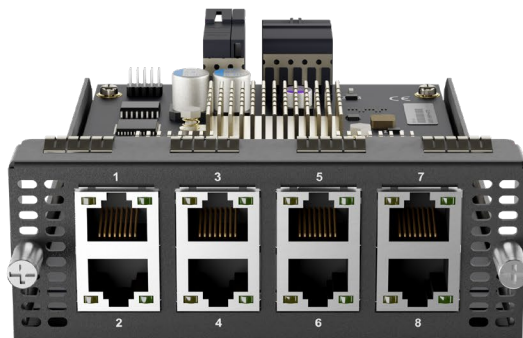


## 8x GE PoE+ Module (EXM-8C)

<b>Interface</b>	8x 10/100/1000M Ethernet Ports* Capable of PoE+
<b>Power Consumption</b>	15 W (Max. 240W, 30W / PoE+ port, total 8 PoE+ ports)
<b>Dimension (L x W x H)</b>	4.1 x 7.4 x 1.5 inches / 103 x 188 x 38 mm
<b>Weight</b>	1.1 pounds / 0.475 kg

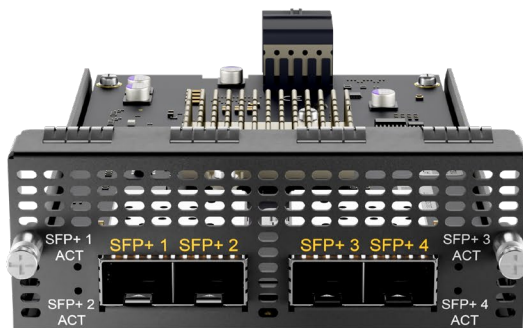
\*Module can be configured with LAN or WAN ports as needed.



## 4x SFP+ Module (EXM-4F)

<b>Interface</b>	4x SFP+ Ports*
<b>Power Consumption</b>	11 W
<b>Dimension (L x W x H)</b>	4.1 x 7.4 x 1.5 inches / 103 x 188 x 38 mm
<b>Weight</b>	0.83 pounds / 0.375 kg

\*Module can be configured with LAN or WAN ports as needed.



## SIM Injector FlexModule (EXM-SIM-BK56)

<b>SIM Slot Capacity</b>	56 4FF Nano SIM Cards
<b>Power Consumption</b>	15 W
<b>Dimension (L x W x H)</b>	4.1 x 7.4 x 1.5 inches / 103 x 188 x 38 mm
<b>Weight</b>	1.30 pounds / 0.6 kg

\*Compatible with EPX, SDX (HW3) and SDX Pro.



## Ordering Information

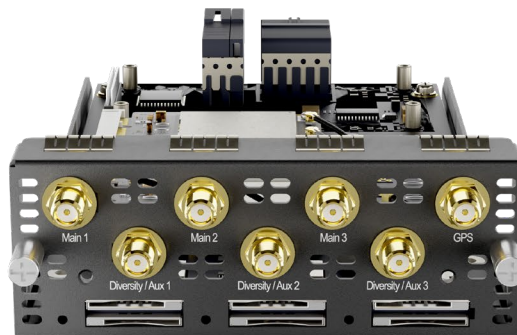
Product Code	Description
EXM-8C	Expansion Module with 8x GE PoE ports
EXM-4F	Expansion Module with 4x SFP+ ports
EXM-SIM-BK56	Expansion Module with 56 SIM slots

CAT-6

CAT-12

## 3x LTE-A Module (EXM-3LTEA)

<b>Interface</b>	3x Embedded Cellular Modems with Redundant 2FF Mini SIM Slots
<b>Antenna Connectors</b>	6x SMA Cellular Antenna Connectors 1x SMA GPS Antenna Connector
<b>Downlink/Uplink Data Rate</b>	300 Mbps / 50 Mbps (CAT-6) 600 Mbps / 150 Mbps (CAT-12)
<b>Power Consumption</b>	20 W
<b>Dimension (L x W x H)</b>	4.1 x 7.4 x 1.5 inches / 103 x 188 x 38 mm
<b>Weight</b>	0.83 pounds / 0.375 kg



## Ordering Information

Product Code	Regions	LTE Bands	3G Bands
EXM-3LTEA-W Embedded Modem(s): 3x LTE-A (CAT-6)	America / Europe	B1, B2, B3, B4, B5, B7, B8, B12, B13, B20, B25, B26, B29, B30, B41	<b>WCDMA / HSPA+ / DC-HSPA+:</b> B1, B2, B3, B4, B5, B8
EXM-3LTEA-P Embedded Modem(s): 3x LTE-A (CAT-6)	Asia Pacific	B1, B3, B5, B7, B8, B18, B19, B21, B28, B38, B39, B40, B41	<b>WCDMA / HSPA+ / DC-HSPA+:</b> B1, B5, B8, B9, B19 <b>UMTS:</b> B6 <b>TD-SCDMA:</b> B39
EXM-3LTEA-R Embedded Modem(s): 3x LTE-A Pro (CAT-12)	America  US Carrier Certifications: AT&T, Verizon, FirstNet	B1, B2, B3, B4, B5, B7, B8, B9, B12, B13, B14, B18, B19, B20, B26, B29, B30, B32, B41, B42, B43, B46, B48, B66	<b>HSPA+:</b> B1, B2, B4, B5, B6, B8, B9, B19

CAT-12

## 4x LTE-A Pro Module (EXM-4LTEA)

<b>Interface</b>	4x Embedded LTE-A Cellular Modems with Redundant 4FF Mini SIM Slots
<b>Antenna Connectors</b>	8x SMA Cellular Antenna Connectors 1x SMA GPS Antenna Connector
<b>Downlink/Uplink Data Rate</b>	600Mbps / 150 Mbps (CAT-12)
<b>Power Consumption</b>	20W
<b>Dimension (L x W x H)</b>	4.1 x 7.4 x 1.5 inches / 103 x 188 x 38 mm
<b>Weight</b>	0.83 pounds / 0.375 kg



CAT-20

## 2x LTE-A Pro Module (EXM-2GLTE-S)

<b>Interface</b>	2x Embedded LTE-A Cellular Modems with Redundant 4FF Nano SIM Slots
<b>Antenna Connectors</b>	8x SMA Cellular Antenna Connectors 1x SMA GPS Antenna Connector
<b>Downlink/Uplink Data Rate</b>	1.2 Gbps / 150 Mbps (CAT-18)
<b>Power Consumption</b>	20W
<b>Dimension (L x W x H)</b>	4.1 x 7.4 x 1.5 inches / 103 x 188 x 38 mm
<b>Weight</b>	0.83 pounds / 0.375 kg



## Ordering Information

Product Code	Regions	LTE Bands	3G Bands
EXM-4LTEA-D Embedded Modem(s): 4x LTE-A Pro (CAT-12)	APAC & EMEA	B1, B2, B3, B4, B5, B7, B8, B9, B12, B13, B14, B17, B18, B19, B20, B21, B25, B26, B28, B29, B30, B32, B38, B39, B40, B41, B66	<b>HSPA+</b> : B1, B2, B3, B4, B5, B8, B9, B19
EXM-4LTEA-R Embedded Modem(s): 4x LTE-A Pro (CAT-12)	America / FirstNet	B1, B2, B3, B4, B5, B7, B8, B9, B12, B13, B14, B18, B19, B20, B26, B29, B30, B32, B41, B42, B43, B46, B48, B66	<b>HSPA+</b> : B1, B2, B4, B5, B6, B8, B9, B19
EXM-2GLTE-S Embedded Modem(s): 2x LTE-A Pro (CAT-20)	Global  US Carrier Certifications: AT&T, T-Mobile, FirstNet	B1, B2, B3, B4, B5, B7, B8, B12, B13, B14, B17, B18, B19, B20, B25, B26, B28, B29, B30, B32, B34, B38, B39, B40, B41, B42, B46 (LAA), B48, B66, B71	<b>HSPA+/ WCDMA</b> : B1, B2, B3, B4, B5, B6, B8, B9, B19

5G

## 2x 5G Module (EXM-2X5G)

<b>Interface</b>	2x Embedded Cellular Modems with Redundant 4FF Mini SIM Slots
<b>Antenna Connectors</b>	8x SMA Cellular Antenna Connectors 1x SMA GPS Antenna Connector
<b>Downlink/Uplink Data Rate</b>	4 Gbps / 700 Mbps (5G) 2 Gbps / 150 Mbps (CAT-20)
<b>Power Consumption</b>	20W
<b>Dimension (L x W x H)</b>	4.1 x 7.4 x 1.5 inches / 103 x 188 x 38 mm
<b>Weight</b>	0.83 pounds / 0.375 kg



## Ordering Information

### Product Code

EXM-2X5GD  
Embedded Modem(s):  
2x 5G

### Regions

Primary: APAC & EMEA  
Compatible: Global

### 5G Bands

**5G (NSA) Sub 6Ghz:**  
n1, n2, n3, n5, n7, n8, n12, n20,  
n28, n38, n41, n66, n71, n77, n78,  
n79

### LTE Bands

B1, B2, B3, B4, B5, B7, B8, B12, B13,  
B14, B17, B18, B19, B20, B25, B26,  
B28, B29, B30, B32, B34, B38, B39,  
B40, B41, B42, B46, B66, B71

### Product Code

EXM-2X5GH  
Embedded Modem(s):  
2x 5G

Primary: North America\*  
Compatibility: Global

US Carrier Certifications:  
AT&T, T-Mobile, Verizon, FirstNet

### 5G Bands

**5G (NSA) Sub 6Ghz:**  
n1, n2, n3, n5, n28, n41, n66, n71,  
n77, n78, n79

B1, B2, B3, B4, B5, B7, B8, B12, B13,  
B14, B17, B18, B19, B20, B25, B26,  
B28, B29, B30, B32, B34, B38, B39,  
B40, B41, B42, B46, B48, B66, B71

## 1x MFA Module with 1TB SSD (EXM-LCDT)

<b>Power Consumption</b>	6W (without SSD)
<b>Dimension (L x W x H)</b>	4.1 x 7.4 x 1.5 inches / 103 x 188 x 38 mm
<b>Weight</b>	0.88 pounds / 0.4 kg

\* The expansion LCD module comes with a license key to enable MediaFast, Docker, Python and KVM for edge computing. The license is tied to the EPX.



## Ordering Information

Product Code	Description
EXM-LCDT	Expansion Module with 1TB SSD and LCD Controls. Support Docker, Python and KVM for edge computing. (Replaces the existing LCD module)